



US 20100033409A1

(19) **United States**

(12) **Patent Application Publication**  
**Park**

(10) **Pub. No.: US 2010/0033409 A1**

(43) **Pub. Date: Feb. 11, 2010**

(54) **ORGANIC LIGHT EMITTING DISPLAY DEVICE**

**Publication Classification**

(76) Inventor: **Sung-Cheon Park**, Yongin-City (KR)

(51) **Int. Cl.**  
**G09G 3/30** (2006.01)  
(52) **U.S. Cl.** ..... **345/76**

Correspondence Address:  
**CHRISTIE, PARKER & HALE, LLP**  
**PO BOX 7068**  
**PASADENA, CA 91109-7068 (US)**

(57) **ABSTRACT**

An organic light emitting display device including a power generator for sending a plurality of voltages to a display unit. The display unit receives a scan signal, a light emitting control signal, and a data signal, which enable a current corresponding to the data signal to flow from a first power supply to a second power supply. The display unit includes a pixel circuit that includes a storage capacitor adapted to store the data signal and to stabilize the stored data signal utilizing a third power supply. A driver IC includes a signal generator for generating the data signal, the scan signal, and the light emitting control signal, and further includes a power generator for generating the first power, the second power, and the third power, wherein the second power and the third power are at a lower voltage than that of the first power.

(21) Appl. No.: **12/508,373**

(22) Filed: **Jul. 23, 2009**

(30) **Foreign Application Priority Data**

Aug. 6, 2008 (KR) ..... 10-2008-0076940

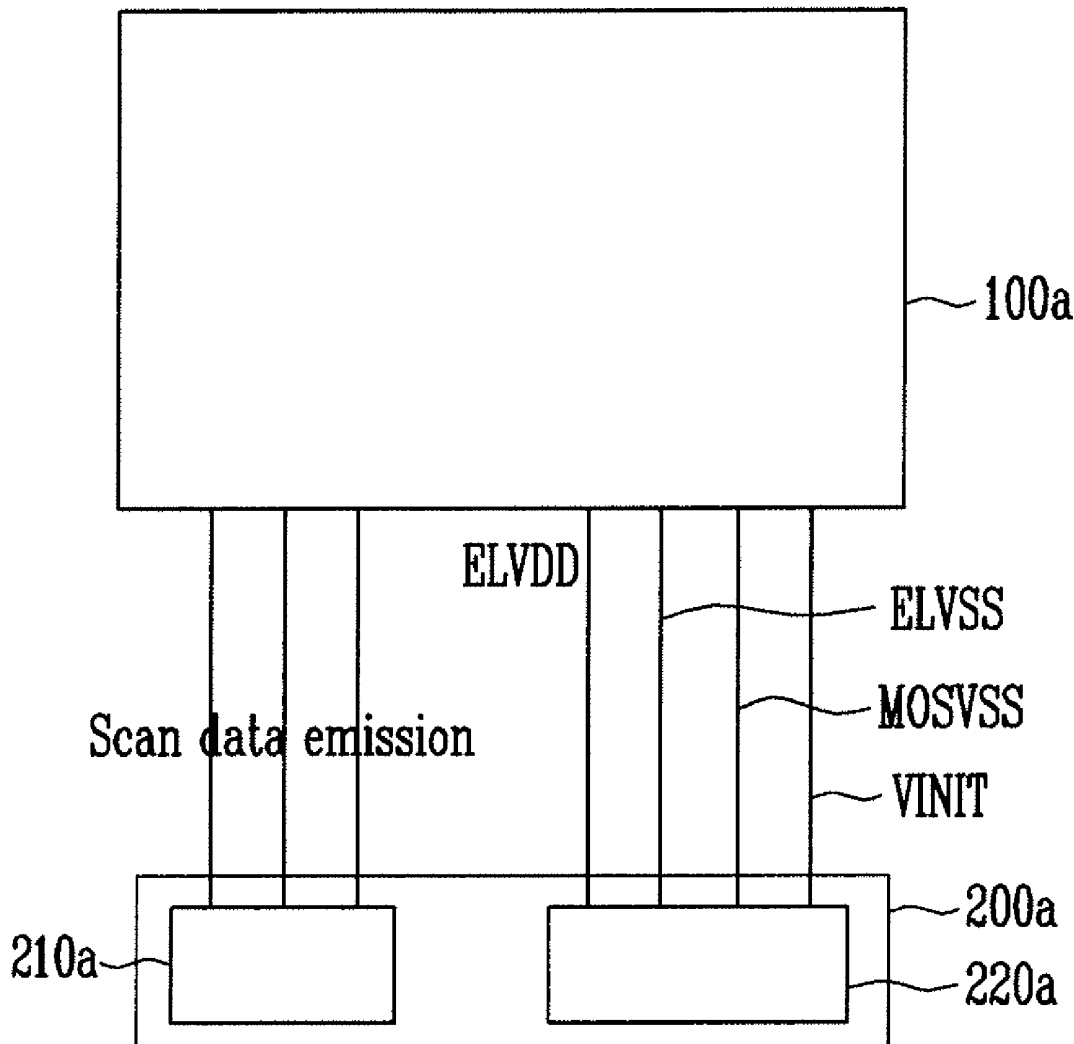


FIG. 1

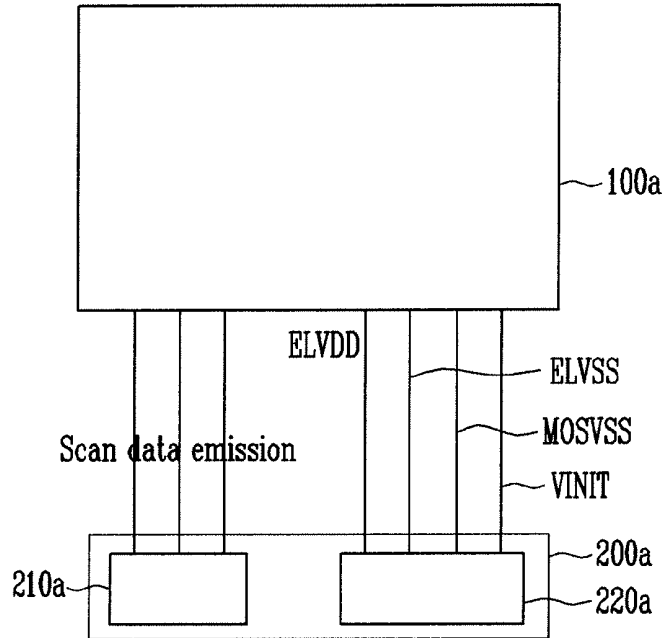


FIG. 2

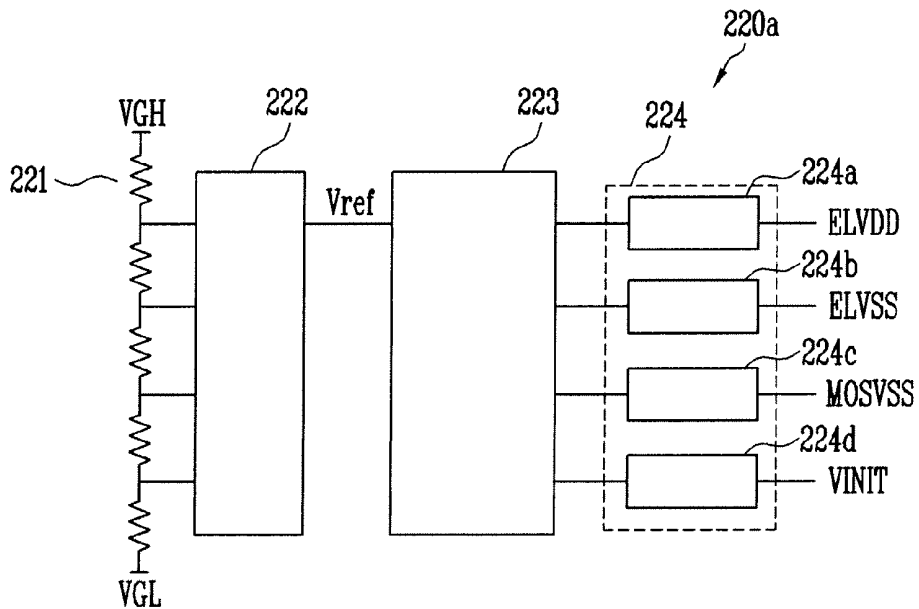


FIG. 3

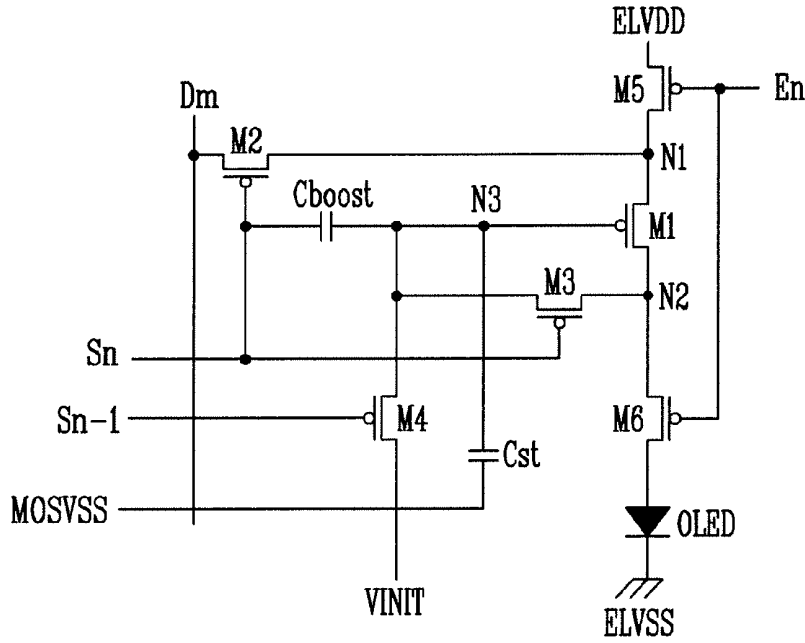


FIG. 4

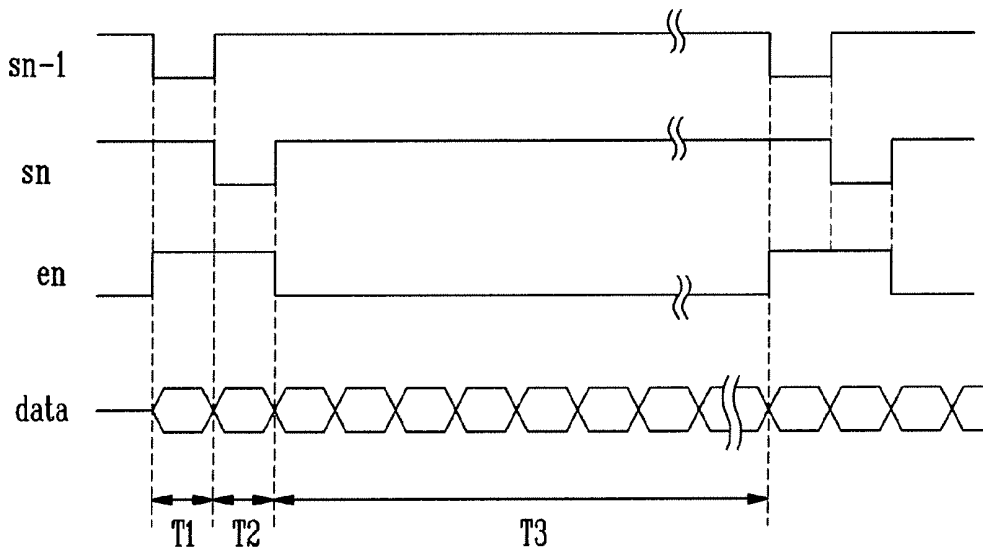


FIG. 5

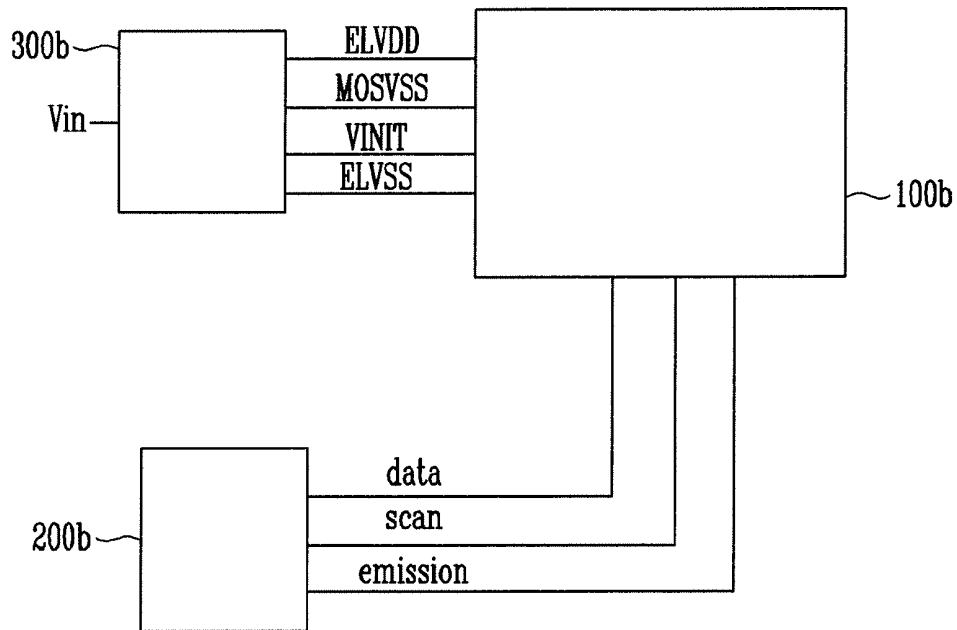
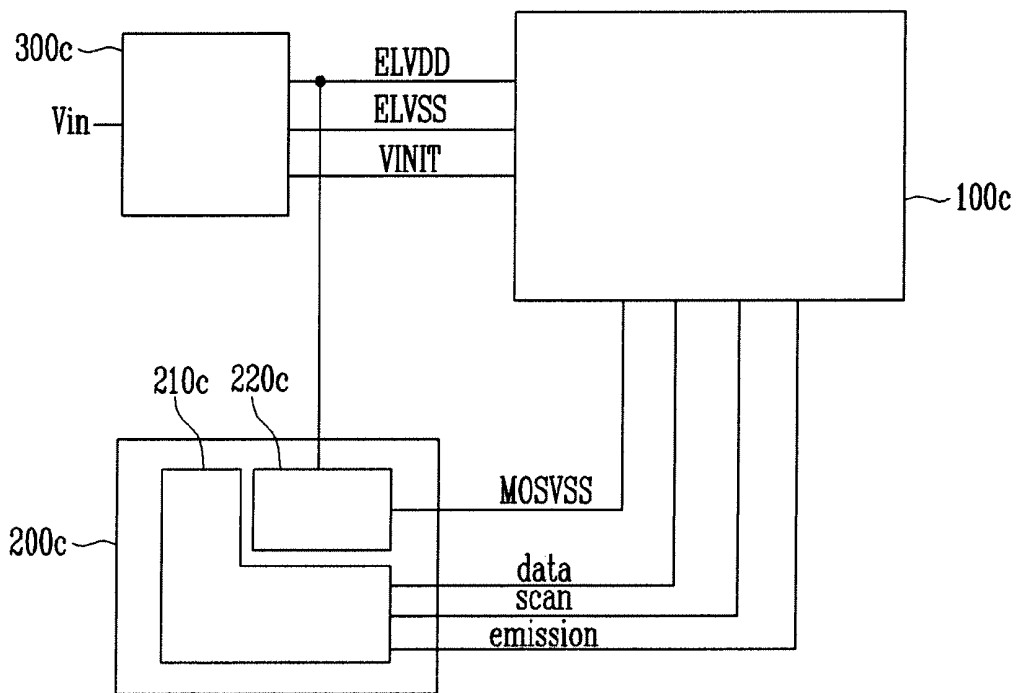


FIG. 6



## ORGANIC LIGHT EMITTING DISPLAY DEVICE

### CROSS-REFERENCE TO RELATED APPLICATIONS

**[0001]** This application claims priority to and the benefit of Korean Patent Application No. 10-2008-0076940, filed on Aug. 6, 2008, in the Korean Intellectual Property Office, the entire content of which is incorporated herein by reference.

### BACKGROUND OF THE INVENTION

**[0002]** 1. Field of the Invention

**[0003]** The present invention relates to an organic light emitting display device.

**[0004]** 2. Description of Related Art

**[0005]** Recently, various flat panel display devices having less weight and volume than cathode ray tubes have been developed. As examples of flat panel display devices, there are liquid crystal display devices, field emission display devices, plasma display panels, organic light emitting display devices, etc.

**[0006]** Among flat panel display devices, organic light emitting display devices have various advantages such as excellent color reproducibility and a very thin profile. Accordingly, organic light emitting display devices have largely expanded their market into a variety of applications such as personal digital assistants (PDAs), MP3 players, and portable phones, to name but a few.

**[0007]** Organic light emitting display devices display images using organic light emitting diodes (OLEDs) that generate light by recombination of electrons and holes generated corresponding to a flow of current.

**[0008]** The organic light emitting diodes are positioned between a first power supply and a second power supply that has a lower voltage than the first power supply, and they control the current flowing between the first power supply and the second power supply by utilizing a data signal, thus emitting light corresponding to the amount of current flowing through the organic light emitting diode.

**[0009]** In an organic light emitting display device as described above, where the first power supply and the second power supply have poor voltage characteristics, the data signal fluctuates, causing the current flowing through the organic light emitting diode to fluctuate, thereby deteriorating picture quality.

### SUMMARY OF THE INVENTION

**[0010]** An aspect of exemplary embodiments of the present invention provides a power generator that sends a plurality of voltages to a display unit in an organic light emitting display device. The power generator is adapted to reduce or prevent the fluctuation of data signals caused by varying the power supply voltage, thereby improving picture quality.

**[0011]** An organic light emitting display device according to a first aspect of the present invention includes a display unit for receiving a scan signal, a light emitting control signal, and a data signal, and enabling a current corresponding to the data signal to flow from a first power supply to a second power supply. The display unit includes a pixel including a switch and a first capacitor having a first terminal and a second terminal, the first terminal coupled to a control terminal of the switch, the first capacitor adapted to receive the data signal through the switch and store the data signal and to stabilize

the stored data signal utilizing a third power supply; and a driver including a signal generator for generating the data signal, the scan signal, and the light emitting control signal, and further including a power generator for generating a first power of the first power supply, a second power of the second power supply, and a third power of the third power supply, the third power applied to a second terminal of the first capacitor, wherein the second power and the third power are at a lower voltage than that of the first power.

**[0012]** An organic light emitting display device according to a second aspect of the present invention includes a display unit for receiving a scan signal, a light emitting control signal, and a data signal, and enabling a current to flow from a first power supply to a second power supply, the current corresponding to the data signal, the display unit including a pixel including a switch and a first capacitor having a first terminal and a second terminal, the first terminal coupled to a control terminal of the switch, the first capacitor adapted to receive the data signal through the switch and store the data signal and to stabilize the stored data signal utilizing a third power supply; a driver for generating the data signal, the scan signal, and the light emitting control signal; and a power generator for generating a first power from the first power supply, a second power from the second power supply, and a third power from the third power supply, the third power applied to a second terminal of the first capacitor, wherein the second power and the third power are at a lower voltage than that of the first power.

**[0013]** An organic light emitting display device according to a third aspect of the present invention includes a display unit for receiving a scan signal, a light emitting control signal, and a data signal, and enabling a current to flow from a first power supply to a second power supply, the current corresponding to the data signal, the display unit including a pixel including a switch and a first capacitor having a first terminal and a second terminal, the first terminal coupled to a control terminal of the switch, the first capacitor adapted to receive the data signal through the switch and store the data signal and to stabilize the stored data signal utilizing a third power supply; a driver for generating the data signal, the scan signal, the light emitting control signal, and a third power from the third power supply, the third power applied to a second terminal of the first capacitor; and a power generator for generating a first power from the first power supply and a second power from the second power supply, wherein the second power and the third power are at lower a voltage than that of the first power.

**[0014]** With an organic light emitting display device according to various embodiments of the present invention, it is possible to vary the voltage sent to a cathode of the organic light emitting diode. Also, even when the voltage applied to the cathode is unstable, picture quality may not be deteriorated.

### BRIEF DESCRIPTION OF THE DRAWINGS

**[0015]** The accompanying drawings, together with the specification, illustrate exemplary embodiments of the present invention, and, together with the description, serve to explain the principles of the present invention.

**[0016]** FIG. 1 is a block diagram of a first embodiment of an organic light emitting display device according to the present invention.

**[0017]** FIG. 2 is a block diagram of one embodiment of a power generator as shown in FIG. 1.

[0018] FIG. 3 is a schematic circuit diagram illustrating a pixel in a display unit as shown in FIG. 1.

[0019] FIG. 4 is a timing diagram illustrating the operation of the pixel shown in FIG. 3.

[0020] FIG. 5 is a block diagram of a second embodiment of an organic light emitting display device according to the present invention.

[0021] FIG. 6 is a block diagram of a third embodiment of an organic light emitting display device according to the present invention.

#### DETAILED DESCRIPTION OF EMBODIMENTS

[0022] Hereinafter, certain exemplary embodiments according to the present invention will be described with reference to the accompanying drawings. Here, when a first element is described as being coupled to a second element, the first element may be directly coupled to the second element or may be indirectly coupled to the second element via a third element. Further, some of the elements that are not essential to the complete understanding of the invention are omitted for clarity. Also, like reference numerals refer to like elements throughout.

[0023] Hereinafter, embodiments of the present invention will be described with reference to the accompanying drawings.

[0024] FIG. 1 is a block diagram of an organic light emitting display device according to a first exemplary embodiment of the present invention. Referring to FIG. 1, the organic light emitting display device includes a display unit 100a and a driver integrated circuit (driver IC) 200a.

[0025] A plurality of pixels (not shown) are arranged in the display unit 100a, each of which includes an organic light emitting diode (not shown) that emits light corresponding to a flow of current. In the display unit 100a are arranged a plurality of scan lines (not shown) for sending scan signals (scan) in a row direction, a plurality light emitting control lines (not shown) for sending light emitting control signals (emission) in the row direction, and a plurality of data lines (not shown) for sending data signals (data) in a column direction.

[0026] Also, the display unit 100a is driven by receiving a first power ELVDD, a second power ELVSS, a third power MOSVSS, and an initialization voltage VINIT. Therefore, current flows through the organic light emitting diode in response to the scan signal (scan), the data signal (data), the first power ELVDD, the second power ELVSS, the third power MOSVSS, and the initialization voltage VINIT so that the display unit 100a emits light, thereby displaying an image.

[0027] The driver IC 200a sends the scan signal (scan), the data signal (data), the light emitting control signal (emission), the first power ELVDD, the second power ELVSS, the third power MOSVSS, and the initialization voltage VINIT to the display unit 100a. The driver IC 200a includes a signal generator 210a for generating the scan signal (scan), the light emitting control signal (emission), and the data signal (data), and a power generator 220a for generating the first power ELVDD, the second power ELVSS, the third power MOSVSS, and the initialization voltage VINIT. The data signal (data) is sent to a selected pixel selected by the scan signal (scan), and a current in accordance with the data signal (data) is generated in the pixel by the first power ELVDD, the second power ELVSS, the third power MOSVSS, and the initialization voltage VINIT, the current flowing through the organic

light emitting diode depending on the state of the light emitting control signal (emission).

[0028] FIG. 2 is a block diagram of an exemplary embodiment of the power generator 220a shown in FIG. 1. Referring to FIG. 2, the power generator 220a includes a resistor row 221 (e.g., a voltage divider) including a plurality of resistors coupled between a high-state voltage VGH and a low-state voltage VGL, a selecting unit 222 for selecting a voltage (e.g., a predetermined voltage) from the resistor row 221 to generate a reference voltage Vref, a charge pump 223 for receiving the reference voltage Vref and increasing it or multiplying it by an integer, and a regulator 224 for receiving the voltage generated by the charge pump 223 and outputting a first power ELVDD from regulator 224a, a second power ELVSS from regulator 224b, a third power MOSVSS from regulator 224c, and an initialization voltage VINIT from regulator 224d.

[0029] The power generator 220a increases the reference voltage Vref selected by the selecting unit 222 (e.g., by multiplying Vref by an integer) utilizing the charge pump 223 to generate a plurality of voltages. The charge pump 223 may be a conventional circuit known to those skilled in the art, and the invention herein is not limited to any particular embodiment of a charge pump. The power generator 220a increases an absolute value of, and inverts, the reference voltage Vref to enable the voltage of the third power MOSVSS to be stably output by the regulator 224c.

[0030] FIG. 3 is a schematic circuit diagram illustrating an example of one of the pixels provided in the display unit shown in FIG. 1. Referring to FIG. 3, the pixel includes a first transistor M1, a second transistor M2, a third transistor M3, a fourth transistor M4, a fifth transistor M5, a sixth transistor M6, a first capacitor Cst, a second capacitor Cboost, and the organic light emitting diode OLED.

[0031] A source of the first transistor M1 is coupled to a first node N1, a drain thereof is coupled to a second node N2, and a gate thereof is coupled to a third node N3.

[0032] A source of the second transistor M2 is coupled to a data line Dm, a drain thereof is coupled to the first node N1, and a gate thereof is coupled to a first scan line Sn.

[0033] A source of the third transistor M3 is coupled to the second node N2, a drain thereof is coupled to the third node N3, and a gate thereof is coupled to the first scan line Sn.

[0034] A source of the fourth transistor M4 receives the initialization voltage VINIT, a drain thereof is coupled to the third node N3, and a gate thereof is coupled to a second scan line Sn-1.

[0035] A source of the fifth transistor M5 is coupled to a first power supply ELVDD, a drain thereof is coupled to the first node N1, and a gate thereof is coupled to a light emitting control line En.

[0036] A source of the sixth transistor M6 is coupled to the second node N2, a drain thereof is coupled to an anode electrode of the organic light emitting diode, and a gate thereof is coupled to the light emitting control line En.

[0037] A first electrode of the first capacitor Cst is coupled to the third node N3, and a second electrode thereof is coupled to a third power supply MOSVSS.

[0038] A first electrode of the second capacitor Cboost is coupled to the first scan line Sn, and a second electrode thereof is coupled to the third node N3.

**[0039]** The anode electrode of the organic light emitting diode OLED is coupled to the drain of the sixth transistor M6, and a cathode electrode thereof is coupled to a second power supply ELVSS.

**[0040]** FIG. 4 is a timing diagram illustrating operation of the pixel shown in FIG. 3. Referring to FIG. 4, a first scan signal sn is sent through the first scan line Sn, a second scan signal sn-1 is sent through the second scan line Sn-1, a data signal data is sent through the data line Dm, and a light emitting control signal en is sent through the light emitting control line En, to the pixel. Also, the initialization voltage VINIT is sent through an initialization line, and the first power ELVDD and the second power ELVSS, which enable the current to flow through the organic light emitting diode OLED, and the third power MOSVSS, which is utilized to stabilize a voltage of the first capacitor Cst, are sent to the pixel.

**[0041]** Herein, the second scan signal sn-1, which is a scan signal enabling the data signal (data) to be sent to a pixel in a previous line of pixels, enters a low voltage state before the first scan signal sn enters a low voltage state.

**[0042]** During operation, in a first period T1 during which the second scan signal sn-1 is in a low voltage state and the first scan signal sn and the light emitting control signal en are in a high voltage state, the fourth transistor M4 is in an on state so that the voltage of the third node N3 becomes substantially the same as the initialization voltage VINIT. At this time, because the fifth transistor M5 and the sixth transistor M6 are in an off state, current substantially does not flow through the organic light emitting diode OLED.

**[0043]** In a second period T2 during which the first scan signal sn is in a low voltage state and the second scan signal sn-1 and the light emitting control signal en are in a high voltage state, the second transistor M2 and the third transistor M3 are in an on state. When the third transistor M3 is in the on state, the voltage at the drain and the gate of the first transistor M1 becomes substantially equal and the first transistor is diode-connected. Therefore, a voltage corresponding to Equation 1 below is stored in the third node N3.

$$V_{N3} = V_{data} - |V_{th1}| \quad \text{Equation 1}$$

**[0044]** Herein,  $V_{N3}$  indicates the voltage of the third node N3,  $V_{data}$  indicates the voltage of the data signal (data), and  $V_{th1}$  indicates the threshold voltage of the first transistor M1.

**[0045]** In a third period T3 during which the first scan signal sn and the second scan signal sn-1 are in a high voltage state and the light emitting control signal en is in a low voltage state, because the voltage of the first scan signal sn rises from a low state to a high state, the voltage of the third node N3 coupled to the second capacitor Cboost also increases. Therefore, the voltage of the third node N3 substantially corresponds to Equation 2 below.

$$V_{N3} = V_{data} - V_{th1} + \Delta V \quad \text{Equation 2}$$

**[0046]** Herein,  $V_{N3}$  indicates the voltage of the third node N3,  $V_{data}$  indicates the voltage of the data signal (data),  $V_{th1}$  indicates the threshold voltage of the first transistor M1, and  $\Delta V$  indicates the rise in the voltage of the first scan signal sn.

**[0047]** Because the light emitting control signal en is in a low voltage state, current flows through the organic light emitting diode OLED, wherein the amount of the current

flowing through the organic light emitting diode OLED substantially corresponds to Equation 3 below.

$$I_{OLED} = \frac{(V_{gs} - |V_{th1}|)^2}{(V_{th1})^2} = \frac{(ELVDD - (V_{data} - |V_{th1}| + \Delta V) - ELVDD - V_{data} - \Delta V)^2}{(V_{th1})^2} \quad \text{Equation 3}$$

**[0048]** Herein,  $V_{gs}$  indicates the voltage between the gate and the source of the first transistor M1, ELVDD indicates the voltage of the first power ELVDD,  $V_{data}$  indicates the voltage of the data signal (data),  $V_{th1}$  indicates the threshold voltage of the first transistor M1, and  $\Delta V$  indicates the rise in the voltage of the first scan signal sn.

**[0049]** Therefore, the amount of current flowing through the organic light emitting diode OLED is substantially independent of the threshold voltage of the first transistor M1, thereby reducing or preventing an occurrence of brightness variation due to a variation of the threshold voltage of the first transistor M1. Also, in the case where the data signal (data) representing a "black" gray level is sent, which substantially does not generate a current through the organic light emitting diode OLED, the voltage of the third node N3 sent to the gate of the first transistor M1 is raised by the voltage of the first scan signal sn so that it is possible to more certainly prevent the current from flowing to the organic light emitting diode OLED. Thereby, the "black" gray level may be more precisely displayed.

**[0050]** In the pixel as described above, the third power MOSVSS is sent to the first electrode of the first capacitor Cst, and the second power ELVSS is sent to the cathode electrode of the organic light emitting diode OLED. The second power ELVSS may also be sent to the first electrode of the first capacitor Cst; however, if the voltage of the second power ELVSS fluctuates, the voltage of the third node N3 may fluctuate by a coupling phenomenon through the first capacitor Cst, although the same data signal (data) is sent. When the voltage of the third node N3 fluctuates, the amount of the current flowing from the first power supply ELVDD to the second power supply ELVSS varies so that picture quality substantially deteriorates.

**[0051]** Also, in order to reduce power consumption, the voltage of the second power ELVSS may be varied according to the surrounding environment. In this case, when the voltage of the second power ELVSS fluctuates, it is undesirable to send the second power ELVSS to the first capacitor Cst. To address this issue, in various embodiments of the present invention, the third power MOSVSS, instead of the second power ELVSS, is generated to be sent to the first capacitor Cst.

**[0052]** FIG. 5 is a block diagram illustrating an organic light emitting display device according to a second exemplary embodiment of the present invention. Referring to FIG. 5, the organic light emitting display device includes a display unit 100b, a driver IC 200b, and a power supply unit 300b.

**[0053]** A plurality of pixels (not shown) are arranged in the display unit 100b, each of which includes an organic light emitting diode (not shown) that emits light corresponding to a flow of current. In the display unit 100b are arranged a plurality of scan lines (not shown) for sending scan signals (scan) in a row direction, a plurality of light emitting control lines (not shown) for sending light emitting control signals (emission) in the row direction, and a plurality of data lines (not shown) for sending data signals (data) in a column direction.

**[0054]** Also, the display unit 100b is driven by receiving a first power ELVDD, a second power ELVSS, a third power MOSVSS, and an initialization voltage VINIT. Therefore, current flows through the organic light emitting diode in response to the scan signal, the data signal, the first power

ELVDD, the second power ELVSS, the third power MOSVSS, and the initialization voltage VINIT so that the display unit **100b** emits light, thereby displaying an image.

**[0055]** The driver IC **200b** sends the scan signal (scan), the light emitting control signal (emission), and the data signal (data). The data signal (data) is sent to a selected pixel selected by the scan signal (scan) sent from the driver IC **200b**, and a current in accordance with the data signal (data) is generated in the pixel by the first power ELVDD, the second power ELVSS, the third power MOSVSS, and the initialization voltage VINIT, and flows through the organic light emitting diode depending on the state of the light emitting control signal (emission).

**[0056]** The power supply unit **300b** generates the first power ELVDD, the second power ELVSS, the third power MOSVSS, and the initialization voltage VINIT to send to the display unit **100b**. The power supply unit **300b** boosts an input voltage  $V_{in}$  to generate the first power ELVDD and inverts the input voltage  $V_{in}$  to generate the second power ELVSS. The third power MOSVSS is generated by inverting and boosting an input voltage  $V_{in}$  using a charge pump, a regulator, and/or any other suitable circuit or device known to those skilled in the art. To this end, the power supply unit **300b** includes a booster amplifying the input voltage to generate the first power ELVDD, an inverter inverting the input voltage to generate the second power ELVSS, and the charge pump inverting and then amplifying the input voltage to generate the third power MOSVSS.

**[0057]** FIG. 6 is a block diagram illustrating an organic light emitting display device according to a third exemplary embodiment of the present invention. Referring to FIG. 6, the organic light emitting display device includes a display unit **100c**, a driver IC **200c**, and a power supply unit **300c**.

**[0058]** A plurality of pixels (not shown) are arranged in the display unit **100c**, each of which includes an organic light emitting diode (not shown) that emits light corresponding to a flow of current. In the display unit **100c** are arranged a plurality of scan lines (not shown) for sending scan signals (scan) in a row direction, a plurality of light emitting control lines (not shown) for sending light emitting control signals (emission) in the row direction, and a plurality of data lines (not shown) for sending data signals (data) in a column direction.

**[0059]** Also, the display unit **100c** is driven by receiving a first power ELVDD, a second power ELVSS, a third power MOSVSS, and an initialization voltage VINIT. Therefore, in the display unit **100c**, the data signal (data) is sent to a pixel by the scan signal (scan), and a current in accordance with the data signal (data) is generated in the pixel by the first power ELVDD, the second power ELVSS, the third power MOSVSS, and the initialization voltage VINIT, and flows through the organic light emitting diode depending on the state of the light emitting control signal (emission).

**[0060]** The driver IC **200c** includes a signal generator **210c** and a power generator **220c**. The signal generator **210c** generates the scan signal (scan), the light emitting control signal (emission), and the data signal (data). The power generator **220c** generates the third power MOSVSS. The data signal (data) is sent to a selected pixel selected by the scan signal (scan) generated in the signal generator **210c**, and a current in accordance with the data signal (data) flows in the pixel in response to the scan signal (scan), the data signal (data), the first power ELVDD, the second power ELVSS, the third power MOSVSS, and the initialization voltage VINIT. The

power generator **220c** receives the first power ELVDD generated in the power supply unit **300c** and converts it into a negative voltage to generate the third power MOSVSS. Thereafter, the power generator **220c** sends the third power MOSVSS to the display unit **100c**.

**[0061]** The power supply unit **300c** generates the first power ELVDD, the second power ELVSS, and the initialization voltage VINIT to send to the display unit **100c**. The power supply unit **300c** boosts input voltage  $V_{in}$  sent from the outside to generate the first power ELVDD, and inverts the input voltage  $V_{in}$  to generate the second power ELVSS.

**[0062]** While the present invention has been described in connection with certain exemplary embodiments, it is to be understood that the invention is not limited to the disclosed embodiments, but, on the contrary, is intended to cover various modifications and equivalent arrangements included within the spirit and scope of the appended claims, and equivalents thereof.

What is claimed is:

1. An organic light emitting display device comprising:
  - a display unit for receiving a scan signal, a light emitting control signal, and a data signal, and enabling a current to flow from a first power supply to a second power supply, the current corresponding to the data signal, the display unit comprising a pixel comprising a switch and a first capacitor having a first terminal and a second terminal, the first terminal coupled to a control terminal of the switch, the first capacitor adapted to receive the data signal through the switch and store the data signal and to stabilize the stored data signal utilizing a third power supply; and
  - a driver comprising a signal generator for generating the data signal, the scan signal, and the light emitting control signal, and further comprising a power generator for generating a first power of the first power supply, a second power of the second power supply, and a third power of the third power supply, the third power applied to a second terminal of the first capacitor,
 wherein the second power and the third power are at a lower voltage than that of the first power.
2. The organic light emitting display device as claimed in claim 1, wherein the power generator comprises:
  - a voltage divider comprising a plurality of resistors coupled in series between a high-state voltage and a low-state voltage;
  - a selector for selecting and outputting a reference voltage from the voltage divider;
  - a charge pump for increasing an absolute value of the reference voltage output from the selector; and
  - a regulator for receiving an output from the charge pump and outputting the third power.
3. The organic light emitting display device as claimed in claim 1, wherein the pixel comprises:
  - an organic light emitting diode;
  - a first transistor having a source coupled to a first node, a drain coupled to a second node, and a gate coupled to a third node;
  - a second transistor having a source coupled to a data line, a drain coupled to the first node, and a gate coupled to a first scan line;
  - a third transistor having a source coupled to the second node, a drain coupled to the third node, and a gate coupled to the first scan line;

- a fourth transistor having a source for receiving an initialization voltage, a drain coupled to the third node, and a gate coupled to a second scan line;
- a fifth transistor having a source coupled to the first power supply, a drain coupled to the first node, and a gate coupled to a light emitting control line;
- sixth transistor having a source coupled to the second node, a drain coupled to the organic light emitting diode, and a gate coupled to the light emitting control line; and
- a second capacitor having a first terminal coupled to the first scan line, and a second terminal coupled to the third node,
- wherein the first capacitor has a first terminal coupled to the third node, and a second terminal coupled to the third power supply.
4. The organic light emitting display device as claimed in claim 1, wherein the power generator is adapted to vary voltage of the second power.
5. An organic light emitting display device comprising:
- a display unit for receiving a scan signal, a light emitting control signal, and a data signal, and enabling a current to flow from a first power supply to a second power supply, the current corresponding to the data signal, the display unit comprising a pixel comprising a switch and a first capacitor having a first terminal and a second terminal, the first terminal coupled to a control terminal of the switch, the first capacitor adapted to receive the data signal through the switch and store the data signal, wherein the stored data signal is stabilized utilizing a third power supply;
- a driver for generating the data signal, the scan signal, and the light emitting control signal; and
- a power generator for generating a first power of the first power supply, a second power of the second power supply, and a third power of the third power supply, the third power applied to a second terminal of the first capacitor, wherein the second power and the third power are at a lower voltage than that of the first power.
6. The organic light emitting display device as claimed in claim 5, wherein the power generator comprises:
- a booster for amplifying an input voltage to generate the first power;
- an inverter for inverting the input voltage to generate the second power; and
- a charge pump for inverting and amplifying the input voltage to generate the third power.
7. The organic light emitting display device as claimed in claim 5, wherein the pixel comprises:
- an organic light emitting diode;
- a first transistor having a source coupled to a first node, a drain coupled to a second node, and a gate coupled to a third node;
- a second transistor having a source coupled to a data line, a drain coupled to the first node, and a gate coupled to a first scan line;
- a third transistor having a source coupled to the second node, a drain coupled to the third node, and a gate coupled to the first scan line;
- a fourth transistor having a source for receiving an initialization voltage, a drain coupled to the third node, and a gate coupled to a second scan line;
- a fifth transistor having a source coupled to the first power supply, a drain coupled to the first node, and a gate coupled to a light emitting control line;
- a sixth transistor having a source coupled to the second node, a drain coupled to the organic light emitting diode, and a gate coupled to the light emitting control line; and
- a second capacitor having a first terminal coupled to the first scan line, and a second terminal coupled to the third node,
- wherein the first capacitor has a first terminal coupled to the third node, and a second terminal coupled to the third power supply.
8. The organic light emitting display device as claimed in claim 5, wherein the power generator is adapted to vary voltage of the second power.
9. An organic light emitting display device comprising:
- a display unit for receiving a scan signal, a light emitting control signal, and a data signal, and enabling a current to flow from a first power supply to a second power supply, the current corresponding to the data signal, the display unit comprising a pixel comprising a switch and a first capacitor having a first terminal and a second terminal, the first terminal coupled to a control terminal of the switch, the first capacitor adapted to receive the data signal through the switch and store the data signal, wherein the stored data signal is stabilized utilizing a third power supply;
- a driver for generating the data signal, the scan signal, the light emitting control signal, and a third power of the third power supply, the third power applied to a second terminal of the first capacitor; and
- a power generator for generating a first power of the first power supply and a second power of the second power supply,
- wherein the second power and the third power are at a lower voltage than that of the first power.
10. The organic light emitting display device as claimed in claim 9, wherein the driver is configured to receive the first power from the power generator and invert it to generate the third power.
11. The organic light emitting display device as claimed in claim 9, wherein the pixel comprises:
- an organic light emitting diode;
- a first transistor having a source coupled to a first node, a drain coupled to a second node, and a gate coupled to a third node;
- a second transistor having a source coupled to a data line, a drain coupled to the first node, and a gate coupled to a first scan line;
- a third transistor having a source coupled to the second node, a drain coupled to the third node, and a gate coupled to the first scan line;
- a fourth transistor having a source for receiving an initialization voltage, a drain coupled to the third node, and a gate coupled to a second scan line;
- a fifth transistor having a source coupled to the first power supply, a drain coupled to the first node, and a gate coupled to a light emitting control line;
- a sixth transistor having a source coupled to the second node, a drain coupled to the organic light emitting diode, and a gate coupled to the light emitting control line; and
- a second capacitor having which a first terminal coupled to the first scan line, and a second terminal coupled to the third node,
- wherein the first capacitor has a first terminal coupled to the third node, and a second terminal coupled to the third power supply.
12. The organic light emitting display device as claimed in claim 9, wherein the power generator is adapted to vary voltage of the second power.

\* \* \* \* \*

专利名称(译)	有机发光显示装置		
公开(公告)号	<a href="#">US20100033409A1</a>	公开(公告)日	2010-02-11
申请号	US12/508373	申请日	2009-07-23
[标]申请(专利权)人(译)	朴成CHEON		
申请(专利权)人(译)	朴成, CHEON		
当前申请(专利权)人(译)	三星DISPLAY CO., LTD.		
[标]发明人	PARK SUNG CHEON		
发明人	PARK, SUNG-CHEON		
IPC分类号	G09G3/30		
CPC分类号	G09G3/3233 G09G2300/043 G09G2300/0819 G09G2330/028 G09G2300/0861 G09G2320/043 G09G2330/02 G09G2300/0852		
优先权	1020080076940 2008-08-06 KR		
其他公开文献	US8269703		
外部链接	<a href="#">Espacenet</a> <a href="#">USPTO</a>		

摘要(译)

一种有机发光显示装置，包括用于将多个电压发送到显示单元的发电机。显示单元接收扫描信号，发光控制信号和数据信号，其使得对应于数据信号的电流能够从第一电源流到第二电源。显示单元包括像素电路，该像素电路包括存储电容器，该存储电容器适于存储数据信号并利用第三电源稳定存储的数据信号。驱动器IC包括用于产生数据信号，扫描信号和发光控制信号的信号发生器，并且还用于产生第一功率，第二功率和第三功率的功率发生器，其中第二功率和第三电源的电压低于第一电源的电压。

